

Aqua Births

the water birth specialists



Beautiful Baths to Birth in

Aquabirths – Hospital & Maternity Baths

Waterbirth & the NHS

Using water for birth is a fabulous means of easing birth for many women and is a birth choice now being offered by many NHS Trusts.

Women enjoy the comfort and warmth of the water, it helps them relax, which reduces pain and the need for other pain relief. The buoyancy enables women to move easily into comfortable upright positions in labour and birth, and for many women it offers a degree of privacy and comfort in the medical environment.

Trusts offering waterbirth as an option for birthing women can see it as part of a widening of patient choice and part of a promotion of normal birth. Research indicates the benefits of water in labour and birth in augmenting long, slow first labours, reducing the need for pain relief and preventing tearing.

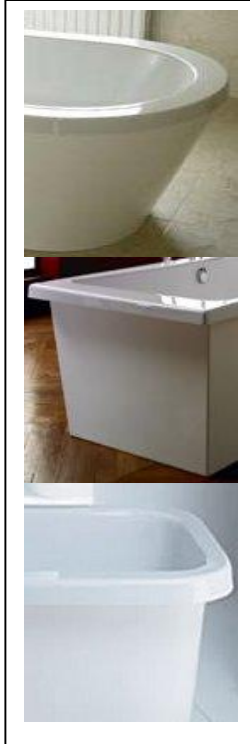
Aquabirths are experts in water birth and in providing birthing baths. We draw on our long experience to design the optimum birthing environments for parents and Trusts.

Our pools can provide:

- Depth and size fit for a range of birthing women.
- A range of shapes and sizes, colours and textures reflecting the design requirements of hospitals.
- A range of possible features for the comfort of mother and attendants.
- Hygiene can be built in with the option of an antibacterial finish.
- There is a pool for every budget.
- Bespoke and ready-made designs.

We can also offer waterbirth training for midwives by experienced waterbirth midwives and a birth pool at home service for Trusts - a quality, cost effective, pool service for the home.

Hospital Maternity Baths



Aquabirths' Oblong Baths

The **Dunoon** model Birthing Bath has been designed specifically to meet the increasing demand for practicable and sensibly priced Hospital Birthing Baths with a contemporary design. With its clean straight lines it provides a roomy bath that enables the mother to move and relax. The bath is a product that benefits from our considerable experience of water and birth and the requirements of midwives and mothers alike.



It can be supplied in a range of colours, effects and textures. |

Features

Roomy and compact

There is ample room for woman to move into comfortable positions and to keep mobile during labour. Its clean straight lines give a modern feel and enable efficient use of the room space. Midwives can easily reach the pregnant woman and allow other hospital equipment (e.g. the bed) to be brought alongside if necessary

Strong and safe

Almost impossible to damage in use, this bath is made of easy to clean fibreglass. All Aquabirths baths can incorporate antibacterial gel coat.

Sloping internal face at end of bath

The birthing mother can comfortably rest or recline against it.

Wide flat rim

The rim has a gentle curvature and can be used for midwife, mother, or partner to sit on or lean against.

Safe depth

The bath is deep enough for the baby to remain safely under water during the final stages of birth, yet it is not too deep for the midwife's back.

Steps / Seats. We sell a detachable internal step / leaning seat, and an external low step for the Dunoon model.



Aquabirths' Oblong Baths (Cont'd)

If you prefer a more **curvy bath**, you can choose a different shape for the end of the bath.



Dunoon Technical Specifications – Dimensions (approx)

	Exterior	Interior
Width	1040mm(41")	840mm(33")
Length	1540mm(61")	1340mm(53")
Height	640mm(26")	625mm(25")
Water depth		525mm-540mm (21"-22")
Water volume	560 litres (120 gal)	
Weight (full)	580kg (1276lbs)	

Large roomy Birth Bath The new Derby Model

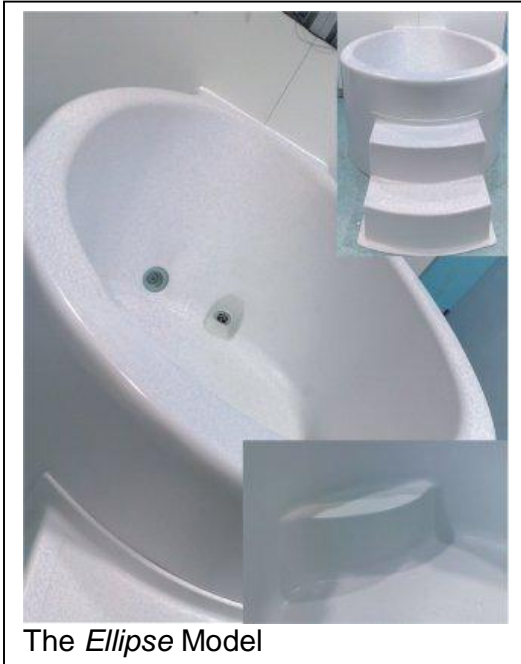


With detail of step/seat and leaning ledge. See 'Semi-Bespoke' Baths for more details.

Aquabirths – Hospital & Maternity Baths

Aquabirths' Elliptical Baths

Currently, we offer three different elliptical baths: Ellipse, Luna and Venus.



The *Ellipse* Model

With their pleasing curves these spacious pools provide a calm and roomy environment for a labouring woman.

The one-piece construction common to most Aquabirths pools makes it an easy bath to keep clean and hygienic. This design also makes it very straight-forward to install.

Features: underwater LED lights (in a choice of positions); choice of bath colours; choice of positions for waste; robust quarter-turn ball-valve waste; clip-on outer steps; in-built inner step/seat; hatchways for easier maintenance. All Aquabirths baths are installed with a trap for a better level of hygiene and odour control: leaving the valve closed is not enough.

Dimensions 185cm long, 135cm wide and 79cm high (64cm internal).



The *Luna* Model

This is available with the rim as shown or with a rounded rim that follows the curve of the bath.



The *Venus* Model
For fitting side on to a wall

The Luna IS shown here on display stands and without its integrated side panels so that you can see the shape of the bath. It would be supplied with the 'all-in-one' construction with integrated side panels that is common to Aquabirths pools.

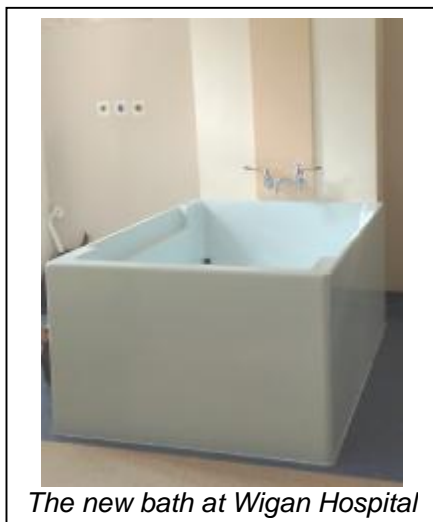
All baths give the maximum amount of space for the labouring woman so that she is free to move and keep mobile during labour. The depth, the sloping sides and broad flat rim are all designed to allow a woman to comfortably adopt a number of postures during labour. The free-standing bath allows easy access for midwives and attendants.

We offer baths as 'all-in-one' construction with integrated side panels for ease of cleaning and installation. We also offer an installation service.

Aquabirths' Semi-bespoke Baths

A bespoke bath tailored to your every wish may be beyond your budget but our semi-bespoke baths allow you to customise features within the framework of a single design. So you can design a bath to suit you with the savings of 'off the peg' baths.

The spacious '**Derby Model**. Aquabirths have teamed up with NHS midwives to develop a larger rectangular bath with features they have found beneficial to mother and birth attendants. It has a **one-piece design** which gives additional benefits over standard baths. It is designed to give all the benefits of a larger bath whilst still being a compact design and a sensible price. You can choose where the corner seat(s) and leaning ledges go and choose to have handles too.



The new bath at Wigan Hospital

Technical Specifications - Dimensions

	Exterior	Interior
Width	1275 mm(51")	1075 mm(43")
Length	1775 mm(71")	1575mm (63")
Height	775mm(31")	625 mm (25")
Water depth		525 mm (21")
Water volume		889 litres (filled to 525 mm depth)
Weight (full)		950 kg

Easier installation

The one piece design means quicker installation as there are no side panels. The baths are made with the external height 150mm greater than the internal depth so that the bath can be cut to the height required. Maintenance is

also easier because, if flexible pipe work is used, the bath can be slid out of place to enable routine inspection, cleaning and repair.

Improved cleanliness

As the bath is all one surface, there are fewer joints and crevices that might encourage microbial build-up.

Comfort and safety

It has a built-in corner seat / step which allows easier access but also gives a place for the mother to sit and relax. Internal shaped ledge(s) for the woman to lean onto; this ledge also has handles to hold during contractions or to assist in entering or leaving the pool.

Choice of waste fittings

The bath can be supplied drilled to take two standard wastes (up to 2" diameter) or for a single larger modern waste.

Aquabirths' Bespoke Solutions

Aquabirths can work with you to design and manufacture bespoke pools suited to your requirements. Baths can be of different shapes, sizes and comprise design features tailored to your needs. Square or curved ends, flat or rounded sides, straight sided or flared – you choose. You can also add features such as internal seat / steps, leaning ledges and handles.



We offer on-site consultancy to discuss your needs and design

Baths of different sizes

New maternity size baths give enough room for a pregnant woman to have the comfort and relief of water during labour without taking the space of a birth bath..



For labouring and post-partum baths.

All the baths mentioned above are in 'Birthing Bath' size (550+ litres capacity). They are also available in **Maternity Size** (400+ litres) and *standard bath* size (200 litres), as are the additional models pictured here. We even do a baby bath of 20 litres!

We can also supply larger numbers of baths and will give discounts for multiple orders.

New models of bath



An elliptical bath designed for corners



The Round Bath

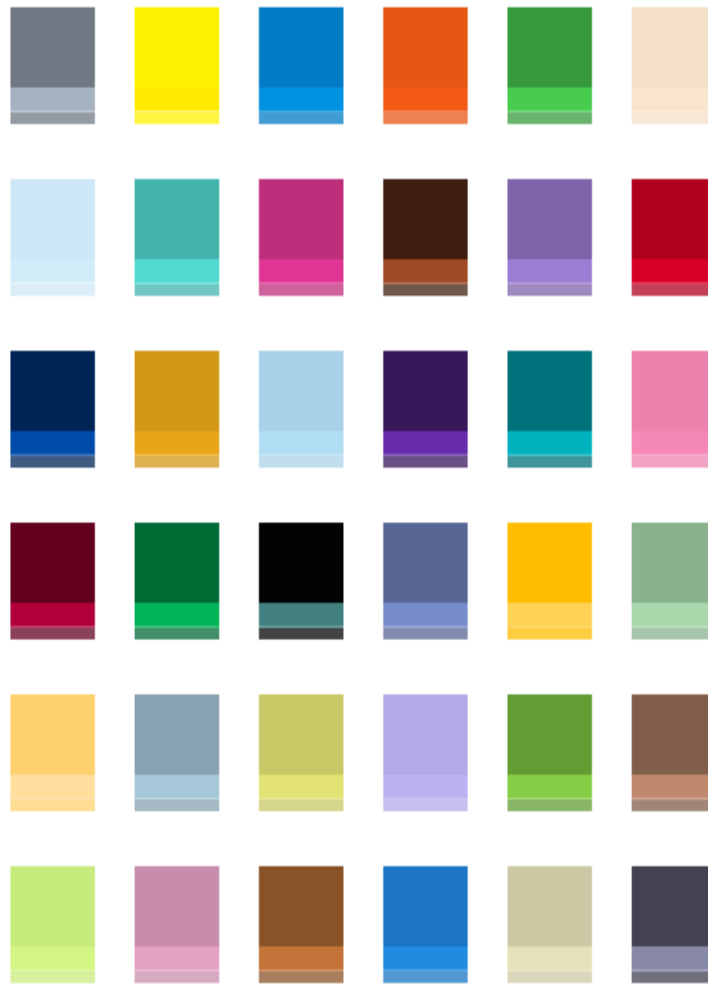


Other shapes to inspire

Aquabirths – Hospital & Maternity Baths

Aquabirths Hospital Maternity Baths

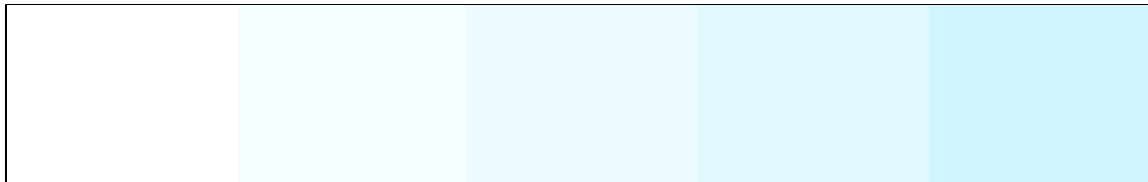
Colour Range



Please note. The range of colours may change without notice. Shades may vary. Online representations of colours may vary.

HANDY COLOR PALETTE

White to Blue Shades.



These are the most popular and effective colour shades.

Special Features

Anti-Bacterial Gel Coat

Antibacterial protection is available in many architectural products used in hospitals and care homes. Built-in during the manufacturing process, an anti-bacterial gel coat provides continuous antibacterial protection that won't wash off or wear away. Protection inhibits the growth of bacteria such as *E.Coli* and *Staphylococcus aureus*.

It's a constant battle for cleanliness in the bathroom, where moisture makes the bathroom a fertile breeding ground and microbes can double in number every 20 minutes. Anti-bacterial protection fights the uncontrolled growth of harmful bacteria and fights the growth of mould and mildew that can cause stains, odours and damage bathroom surfaces. Anti-bacterial technology is built-in to your bathroom fixtures during the manufacturing process and won't wash off or wear away giving you continuous protection that keeps bathroom surfaces cleaner, fresher and more hygienic.

This technology has a long history of safe usage in hospitals around the world. Anti-bacterial gel coats are not a substitute for normal cleaning practices and are not designed to protect users from illness. However, it does provide an added measure of cleanliness, working continuously to keep medical equipment cleaner between cleanings.

Aquabirths –

the first British birth bath company to offer anti-bacterial gel coat.

Dismountable Birth Pools

Where space, budget and flexibility are paramount concerns, then Aquabirths dismountable pools may be the answer – with no compromise on safety and cleanliness. These products have been designed with homebirths and smaller birth centres in mind. The equipment is easy to assemble / disassemble, portable and can be fitted in a small car

	<p style="text-align: center;">The Insulated Circular Pool</p> <p style="text-align: center;">Dimensions: 1.5m (5') diameter 75cm (2'6") depth.</p> <p style="text-align: center;"><i>Designed by midwives. Simple, robust and comfortable: a spacious and well-proven design. Its fibreglass construction means it is light, tough and low maintenance. It dismantles into 4 quarter-arcs.</i></p> <p style="text-align: center;">£1500+carriage</p>
<p style="text-align: center;">All pools are supplied with: pump and hose for filling and emptying; foam base; insulating cover; 1 set of liners; Thermometer; Sanitizer</p>	<p style="text-align: center;"><i>Additional Items:</i> Submersible Pumps from £61 + £15 carriage Thermometers - £12 + p&p Liners - POA Sterilizing Powder (500g) - £6.50 + p&p</p>

The circular portable birth pool can also be leased. Please contact us for details. 0845 230 1381

Leasing. It is possible to lease the dismountable birth pool. This costs £160 per month (that is less than £40 per week) plus delivery and collection; there is a minimum lease of 2 months. The pool comes with equipment and a set of two liners: the thick outer liner, and the inner liner (the blue one in the picture above) which can be thermally disinfected and re-used by washing within the hospital's own laundry system. We find a liner can do 3-6 births before replacement is necessary. Replacement liners are £50 (lightweight) +p&p or £75 (heavyweight) +p&p.

Aquabirths Ltd

Who we are and what we are about.

Our passion is good births for mothers and babies. And so we see ourselves as offering a service as much as a product. We care that our baths are well designed, good quality and good value so that more women can enjoy the benefits of using water before, during and after birth.

Our vision is for a birthing pool – not just in every maternity unit - but in every birthing room. And to this end we have set out to design pools that are good quality and good value. Aquabirths make quality, affordable baths and the more baths you buy the better the value.

For too long the supply of birth pools in Britain has been highly restricted, expensive, and given hospitals little or no choice. We are bringing all the advances of design and technology in the current bath market to birthing and maternity baths so as to give women and midwives, baths and pools that are appropriate and practical for the clinical environment whilst being aesthetically pleasing and tailored to your needs.

We do not believe in a ‘take it or leave it’ range of pools because every maternity unit is different. Aquabirths with our partners are able to provide a range of high quality baths in a range of innovative designs, shapes and sizes. These can be ready to install baths or bespoke and semi-bespoke baths tailored to your needs. This ability to modify our baths to your particular needs is one of our trademarks.

We put midwives and estate managers in the driving seat of the design and manufacture of our baths and pools. We consult with midwives at every point of the design of their birthing pool. And we consult and listen and learn from midwives, women, those who make the pool and those who fit it. Our designs are therefore constantly changing and improving. Our rectangular baths are very different to where they were 2 years ago and will probably be different again in another 2 years as they are shaped and reshaped by our customers and ourselves in collaboration. It is what makes what we do fun.

We make it easy. When you buy a bath from Aquabirths we care that it works for you and so we are prepared to come and do a site visit and discuss the what, where and how of the pool/bath. Once the pool is made for you we can arrange delivery on your behalf and we offer an installation and fitting service by our expert installation team.

Aquabirths & the NHS

Aquabirths Ltd, based in Bradford, West Yorkshire, is committed to supplying high quality and durable maternity baths to hospitals and the health care sector at reasonable prices.

Established in 1994, Aquabirths already supplies a wide range of health sector and NHS clients.

Quality, safety and cost-effectiveness are all issues for modern health care providers, and Aquabirths can work with Health Sector Professionals to enable them to provide the high level of patient care they desire.

Using our experience, expertise and a high quality of service, Aquabirths will provide products and services tailored to your needs. We have bespoke and ready-made solutions to the maternity care needs of modern Health Services.

All pictures for illustration only.
E.E.&O.